

# *Micro Specialties, Inc.*

## CR1000 Data Collection Program Version 912 May 24, 2010

<u>Station Type</u>	<u>Update Rate</u>	<u>Sensor Groups</u>	<u>Sensor Fields</u>
SnowCourse	5 minutes (1)	group 1 group 2	variable 10-15 11

<u>Optional Sensors</u>	<u>CR1000 Flag Location</u>	<u>Default</u>
YSI Air Temperature	hasYSI	1
HMP45 temp/rh	hasHMP45	0
Barometric Pressure	hasBaro	0
Tipping Bucket Accumulation	hasTB	0
Young Wind Sensor	hasWind	0

### Program Revisions:

- **912.0** - The original revision. **Warning: Upgrade to the newest revision ASAP at all sites.**
- **912.01** - Fixes a typo which caused the daily values to be saved at an interval of 1140 minutes. **Advisory: Upgrade to the newest revision ASAP at all sites.**
- **912.02** - Previous revisions always saved the group2 (wind) table, even if no wind sensors were present. This was resolved by placing the call to the data table in a conditional, requiring the hasWind variable to be > 0. This is currently the newest revision.

**CR10X data collection program version 912 is a MicroMet multiple data-group telemetry program for the CR1000 data logger.** This program has a normal sensor update rate of 5 minutes, and produces a single hourly data report via MicroMet and logging storage. The hourly MicroMet report values are scaled for transport, while the logging reports are stored in real number form.

**This program can produce more than one data report, and thus requires MicroMet MBTU10X revision 2.04 or greater.**

**This program will produce 1 or 2 hourly telemetry report for a total of 24 or 48 data messages per day. In addition, the MicroMet data modem will produce at least 1 Remote Status Report each day.**

### Special Feature Notes

This program has several special features which will allow it to be used in multiple data sites without revision. These features, however, require some attention and manipulation by the installation and service technicians.

1. A special Public variable, fastUpdate, will increase the sensor update rate to 10 seconds, when its value is 1. At power up, fastUpdate is always set to 1, enabling rapid sensor update for test purposes. At midnight, fastUpdate is automatically reset to 0, reducing the sensor update rate to 5 minutes. This variable may be edited to increase the sensor update

rate at any time, but its value will always return to 0 at midnight to fix the update rate to 5 minutes.

2. Either the YSI 44211 wide-range air temperature sensor, or the HMP45 air temperature/rH sensor, or both may be utilized. See **Selecting the Air Temperature Sensor** below.
3. Snow Water and Storage Precip sensors are selectable by setting an input location variable when setting up the site. See **Setting Snow Water and Precipitation Parameters** below.
4. An offset may be applied to the snow depth sensor to convert the height reported by the sensor to a snow depth value. See **Setting the Snow Depth Offset** below.
5. A multiplier and offset may be applied to accommodate various barometric sensors. See **Setting Barometer Parameters** below.
6. If battery voltage is less than 11.5VDC, the program will send data messages to the MicroMet data modem only at Midnight, 0600, 1200 and 1800. This method is intended to conserve battery power when the battery reserves are low.
7. A numeric value may be entered which will serve as a site identifier. This will help to ensure that data records are never transposed among the various sites. Edit the Public variable, **siteID** with LoggerNet to set the site identifier.

**Site and sensor variables are initialized to default values when the program first loaded into the CR1000, and whenever a new program is sent to the CR1000.** The technician should always verify that the variables are acceptable before leaving the site. Public variables, which may be modified by right clicking, then editing each variable on a NUMERIC DISPLAY within LoggerNet, as shown in Figure One.

### Sensor Configuration

SENSOR	INPUT	EXITATION	XTROL	VARIABLE	SENSOR MODEL
Snow Water	SE1	SW12V	C9	snowWater	
Storage Precip	SE2	SW12V	C9	stoPrecip	
Air Temperature (YSI )	SE4	VX1		airTemp	YSI 44211 wide range
Air Temperature (HMP45)	SE5		C4	airTemp	HMP 45 temp/rh
rH	SE6		C4	rh	
Barometric Pressure	SE7	12V	C7	baro	
Site Battery	SE8	Battery Divider		Batt_volt	
Snow Depth	DIFF7	12V	C3	snowDepth	Judd Snow Depth sensor
Solar Radiation	DIFF8			solarRad	LiCor 1200X
Tipping Bucket Precip	C2	5V		tbNow, tbTotal	

### Control Port Assignments

CONTROL	FUNCTION
C2	Tipping Bucket Input
C3	Judd Snow Depth control
C4	AirTemp/rH probe (HMP45)
C5	Serial data out to MicroMet
C6	Reserved- COM3 MicroMet
C7	Barometer control
C8	Force a MicroMet data message

### Special Public Program Setup Variables

**Important:** These variables are saved frequently to the Setup table so that the values are retained in the event of power failure. These variables are reset to default values whenever the program is loaded, or reloaded into the CR1000.

Label	Functionality (Public Table)
SiteID	Numeric ID to identify the particular site
snowMult	Snow water multiplier
snowOffset	Snow water offset
precipMult	Storage Precip multiplier
precipOffset	Storage Precip offset
snowDepOffset	Snow depth offset 0.02-1

baroMult	Barometer multiplier
baroOffset	Barometer offset
hasYSI	set to 1 to enable a YSI 44211 air temperature sensor (default=1)
hasHMP45	set to 1 to enable HMP45 temp/rh sensor
hasTB	set to 1 to enable Tipping Bucket precipitation sensor
hasBaro	set to 1 to enable CS100 barometric pressure sensor
hasWind	set to 1 to enable wind data collection and the Group 2 MicroMet report
fastUpdate	Set to 1 to update all sensors at a ten second rate. (resets to 0 at midnight)
tbTotal	Tipping bucket running accumulation (0 – 4095)

### Current Sensor Value Locations (Public Table)

These are **public** variables, which contain the current sensor readings.

Label	Functionality
Batt_Volt	Site Battery Voltage. Requires a battery voltage divider connected to the site battery.
snowWater	Snow Water (inches)
stoPrecip	Storage Precipitation (inches)
snowHeight	-1 * Snow depth sensor height measurement (inches)
snowDepth	snowHeight + SnowDepOffset
airTemp	Air Temp ( deg F)
rh	Relative Humidity (percent)
solarRad	Solar Radiation (watts/meter^2)
baro	Barometer CS100 (millibars)
tbNow	Tipping bucket 10 second accumulation (hundredths of an inch)
windSpeed	Wind Speed (mph)
windDirect	Wind Direction (degrees north)

### Daily Sensor Value Locations (Daily Table)

These are public variables, which contain daily values processed by the program.

Label	Functionality
MaxAirTemp	Daily Maximum Air Temperature
MinAirTemp	Daily Minimum Air Temperature
AvgAirTemp	Daily Average Air Temperature
DailySolRad	Daily Average Solar Radiation
DailyMaxWind	Daily Maximum Wind Speed
DailyWindSp	Daily Average Wind Speed
DailyWindDir	Daily Average Wind Direction
DailyWindStd	Daily Wind Direction Std Deviation

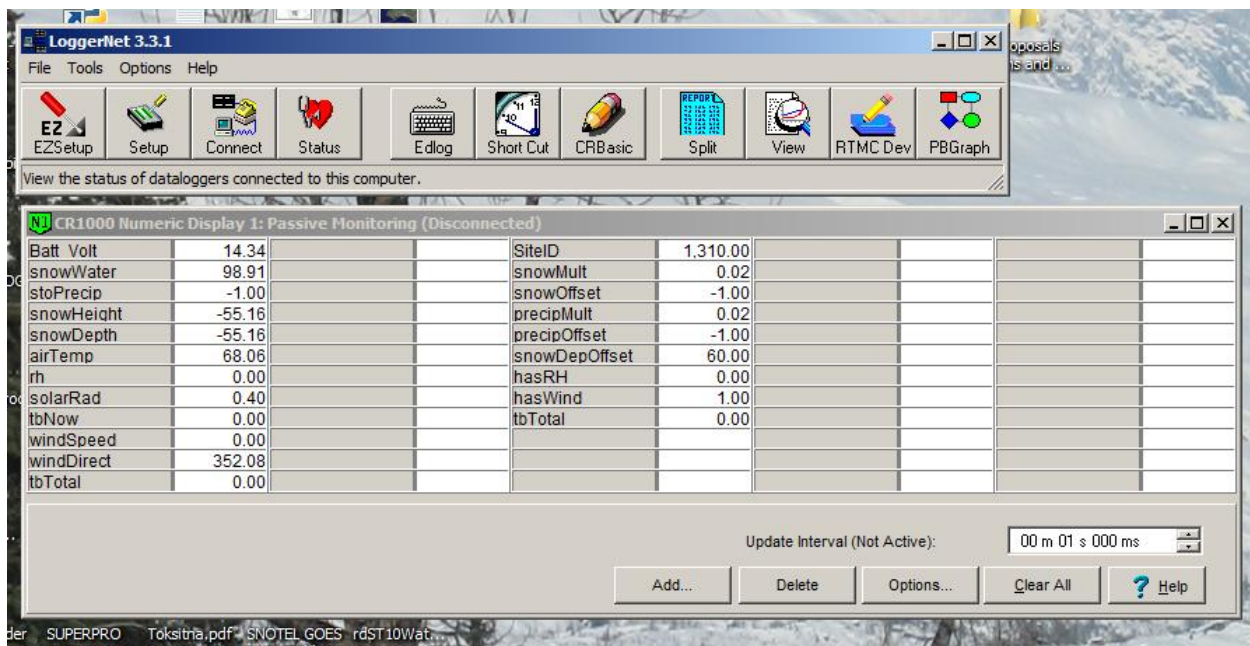


Figure One – Typical Loggernet Numeric Display with Variables

## Data Reports

**Important:** Hourly reports are sent to the MicroMet Data Modem, and are also logged to the CR1000 Data Tables. Hourly logging reports are not scaled like MicroMet reports, but are stored in the CR1000's low-resolution (FP2) format.

### Hourly report - group 1, priority 1

<u>Sensor Field</u>	<u>MicroMet Conversion Equation</u>
1 Site Battery Sample	100 * Batt_Volt
2 Snow Water hourly average	10 * AvgSnowWater
3 Storage Precip hourly average	10 * AvgStoPrecip
4 Current Air Temperature	10 * (airTemp + 90)
5 Maximum Air Temp (previous day)	10 * (MaxAirTemp + 90)
6 Minimum Air Temp (previous day)	10 * (MinAirTemp + 90)
7 Average Air Temp (previous day)	10 * (AvgAirTemp + 90)
8 Snow Depth hourly average	10 * hour average snow depth
9 Solar Radiation Hourly Average	1 * AvgSolarRad
10 Solar Radiation Daily Average	1 * DailySolRad
*11 Relative Humidity Current Sample	10 * rh
*12 Barometric Pressure	1 * baro
*13 Tipping Bucket Accumulation	100 * tbTotal

\* Group 1, Sensors 11 through 13 are individually enabled with setup flags as follows:

<u>Setup Flag</u>	<u>Sensor Field</u>
hasHMP45	Relative Humidity
hasBaro	Barometric Pressure
hasTB	Tipping Bucket Precipitation Accumulation

**Important:** If any of the above, asterisk (\*) marked sensors are enabled, that sensor field is added to the telemetry report, making the report one field longer than the base of 10 sensors. Optional sensors are added in order listed above. So, for example, if hasHMP45 is 1, the Relative Humidity value is added at position 11, immediately following Daily Solar Radiation, in group 1.

### Hourly report – group 2, priority 1 Enabled only if hasWind variable >= 1

<u>Sensor Field</u>	<u>MicroMet Conversion Equation</u>
1 Hourly Wind Speed Max	* 10
2 Hourly Wind Speed Average	* 10
3 Hourly Wind Direction Average	* 10
4 Hourly Wind Direction Std Deviation	* 10
5 Daily Wind Speed max	* 10
6 Daily Wind Speed Average	* 10
7 Daily Wind Direction Average	* 10
8 Daily Wind Direction Std Deviation	* 10
9 Program ID Major Revision	* 1
10 Program ID Minor Revision	* 100
11 Site ID	* 1

## Selecting the Air Temperature and rH Sensors

By default, this program utilizes a YSI 44211 wide-range air temperature sensor. As an alternative, an HMP45 temperature/rH sensor may be installed instead or in addition. If you install an HMP45 sensor, you must set the setup variable named **hasHMP45** to 1. Doing so will enable the HMP45 sensor. **Important:** The sensor variable named **airTemp** will display the air temperature sampled from the HMP45 sensor when hasRH is non-zero (1) and hasYSI is zero. If hasYSI is non-zero (1), airTemp will display the YSI air temperature sensor value. If hasYSI is non-zero and hasRH is non-zero, the reports will use the YSI temperature and the HMP45C rH value. The following table summarizes the actions resultant from hasYSI and hasHMP45 setup variables.

<u>hasYSI</u>	<u>hasHMP45</u>	<u>Action</u>
1	0	airTemp from YSI; rH is excluded from data report
0	1	airTemp and rH from HMP45; rh is included in data report
1	1	airTemp from YSI; rH from HMP45; rH is included in data report

## Setting Barometric Sensor Parameters

By default, the barometric pressure sensor is disabled. To enable the barometer, set the Setup Variable **hasBaro** to 1. By default, the barometer multiplier and offset are setup for the Vaisala PTB101 sensor, also sold by Campbell Scientific as model CS105. This sensor is no longer available from CSI, so the table below provides barMult and Offset values for both the Vaisala and the Setra 278 (CS100) barometers.

<u>Barometer Setup Variable</u>	<u>Vaisala PTB101 CS105</u>	<u>Setra 278 (CS100)</u>
baroMult	0.184	0.200
baroOffset	600	600

## Setting the Snow Depth Offset Variable

The Judd snow depth sensor actually reports the distance between itself and the ground or the top surface of the snow pack. This program allows the technician to apply an offset which will convert the distance reported to actual snow depth. The snow distance (Sn\_height) is made negative, then the offset (SnowDOff) is added to derive the actual snow depth. To adjust the snow depth offset simply **right click**, then edit the Input Storage Location variable named **SnowDepOffset**. If the snow depth sensor is sitting above bare ground, the value of SnowDepOffset should be set to the distance (snowHeight) reported by the sensor.

**Caution:** The technician should record the height of the snow depth sensor above bare ground in case the CR1000 program needs to be reloaded during the snow season.

## Setting the Site ID Variable

This program saves a variable named **SiteID** in the data summaries to help eliminate the possibility of confusing data records among the various data sites. To adjust the SiteID, simply **right click** then edit the location on the Numeric Display. The new SiteID will then be included in all subsequent data summaries.

## Setting Snow Water and Precipitation Parameters

The Snow and Precip transducer sensors may be one of several types. When installing a new sensor, first verify that the sensor you are installing is compatible with the existing wiring scheme in use at the site. A couple of things to consider:

- What is the sensor's output? If the sensor's output is 4-20ma, then a termination resistor should be used at the SE inputs of the CR1000.
- What is the sensor's excitation requirement? If the sensor requires an excitation voltage other than 12VDC, some voltage conversion method may be required.

When changing a sensor, you must edit two input locations. For snow water, the locations are named **snowMult** and **snowOffset**. For storage precip, the locations are named **precipMult** and **precipOff**. Edit the locations according to this table:

<b>Sensor</b>	<b>Mult</b>	<b>Offset</b>	<b>Comment</b>
100" Druck PMP 317 used w/o 2:1 divider	0.02	-1.0	Range is 0-100"
200" Druck PMP 317 used w/o 2:1 divider	0.04	-2.0	Range is 0-200"
0-69" Druck	0.0308	-7.7	
0-50" Sensotech or Halpern	0.02	0.0	
0-100" Sensotech or Halpern	0.04	0.0	
0-200" Sensotech or Halpern	0.08	0.0	

**Note:** The Druck PMP317 transducers are calibrated by NWCC personnel. The table above assumes 0" equals 50 millivolts, and full scale equals 5050 millivolts. If this is not the case for your transducer, you may have to calculate the multiplier and offset. Use the following general formulae:

$$\text{Mult} = \text{fs} / 5000$$

Where fs is full scale value in inches ie: 100", 200"

$$\text{Offset} = 50 * \text{mult}$$

If these variables are set correctly, the Numeric Display tab should display the actual head on the transducers at the following Input Storage Locations:

**snowWater** for the snow water sensor

**stoPrecip** for the storage precip sensor

**Note:** If either the snow or precipitation sensor is not used, set its multiplier and offset to 0.0. This will force the CR1000 to record zero values for the non-existent sensor.

## Forcing a Data Message

This program normally generates one or two data messages at the end of each hour. These data message are sent to the **MicroMet** data modem. Usually it is highly inconvenient to wait for the end of the hour when one wishes to observe a data message being delivered to the **MicroMet** data modem. By temporarily connecting **5V** to **C8** on the CR1000 wiring panel, the technician can force the CR1000 to immediately send its hourly data messages to the **MicroMet** data modem.

Use the following procedure to force a new data message, and observe it at the **MicroMet** operator's console.

1. After completing sensor validation with LoggerNet, exit LoggerNet.
2. Disconnect the PC from the CR1000 and connect the PC to the **MicroMet** operator's console port.
3. Connect the data cable between the CR1000 and the **MicroMet** data modem.
4. Open the communications program with which you normally communicate with the **MicroMet** data modem.
5. Command the **MicroMet** to show level five advisories (verbose 5).
6. On the CR1000 Wiring Panel, momentarily connect a jumper wire between **5V** and **C8**. This will initiate a new data message from the CR1000 within 10 seconds.
7. Observe the data message advisory on the **MicroMet** console. The message format should be correct, and the number of sensors should be correct for the application.
8. Disconnect the temporary jumper from between **5V** and **C8** on the CR1000 Wiring Panel.